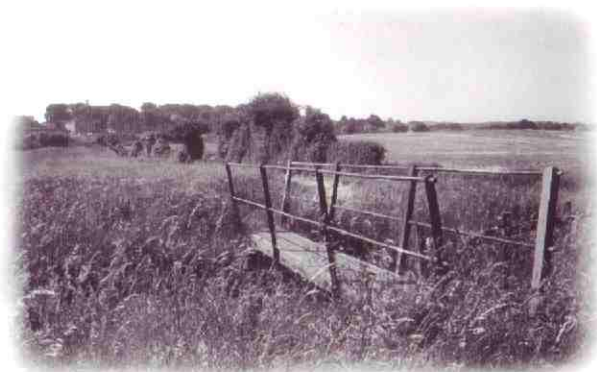
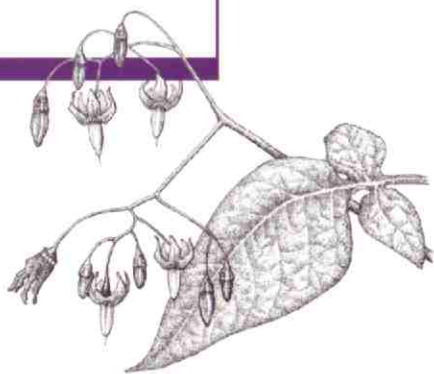


EXPLORING THE  
COUNTRYSIDE

# BETWEEN CORNFORTH & COXHOE



## BETWEEN CORNFORTH & COXHOE

There is a good network of footpaths to explore around these neighbouring villages, with an attractive walkway providing a direct link between the two.

The walkway provides one of the few means of crossing the A1(M) – built in the late 1960s and now the most obvious feature dividing Cornforth from Coxhoe. However, as you walk through the countryside you will also find yourself crossing backwards and forwards across Coxhoe Beck. In centuries past this beck would probably have been seen as the main feature separating the two villages, as well as a vital resource: corn, fulling and paper mills all developed along the beck from mediaeval times onwards.

Today Coxhoe Beck remains one of the loveliest features in the landscape, meandering its way through low-lying fields.

By contrast the walkway is as straight as a die, following the route of one of the earliest railway lines to be built anywhere in the world. Known as the Clarence Railway (named after of the Duke of Clarence - later William IV) its purpose was to carry coal from Crowtrees Colliery, north of Coxhoe, to Port Clarence on the Tees. From here the coal was then shipped to London since no rail link yet existed. The first load was transported on 16th January 1834 with the wagons drawn by teams of horses.

In 1835 the Clarence Coach Company was formed and passengers could then travel from Stockton to Coxhoe by rail and onto Durham by road coach. The fare for the whole journey was 3/6d inside or 2/6d outside (about 17p or 12p). The only other railway company offering a passenger service at this time was the Stockton and Darlington. The line continued in operation until the late 1970s, although passenger services had ceased back in 1902.

Today the walkway, with its mature hedgerows and flower-rich grasslands, forms an important wildlife corridor.



*Brown lipped snail*





## GETTING ABOUT

By using the footpath network in conjunction with the Coxhoe-Cornforth Walkway (1½ miles /2.5 kilometres in length) it is possible to plan a variety of walks in the area. Please note that footpaths (usually waymarked with yellow arrows) should not be used by cyclists, but you can ride a bike along the walkway. Unfortunately there are no bridleways in the area.

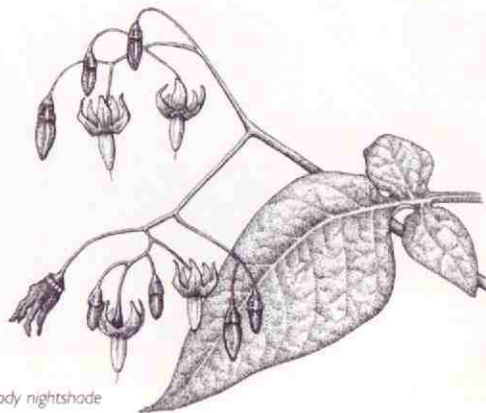
If you intend exploring the wider rights of way network you may find it helpful to buy the Ordnance Survey 'Explorer' series sheet 305 (Bishop Auckland, Spennymoor, Newton Aycliffe, Sedgefield and Crook). This includes the Cornforth and Coxhoe area.

## GETTING THERE

Plenty of buses stop in the villages of Cornforth and Coxhoe. You can get information on local buses by phoning the Public Transport Travel line on 0870 6082608. They can give you detailed advice on planning your journey to either Cornforth or Coxhoe. You can also use the journey planner on the travel pages of Durham County Council's web site: [www.durham.gov.uk](http://www.durham.gov.uk)

## ACKNOWLEDGEMENTS

We are particularly grateful to Mr. R. Walton for all the information he has contributed for this leaflet. If you'd like to find out more, especially about the history of the area, you may wish to read his two books: 'A History of Coxhoe' and 'A History of Thrislington, Cornforth and West Cornforth', both published by The Coronation Press, Church Street, Coxhoe.



Woody nightshade

- Please keep to the public rights of way and other paths shown on the map, ensuring that dogs are under close control at all times. Dogs must not be allowed to run in amongst crops and should be on a lead when livestock are about.
- Take your litter home with you.
- Remember to close all gates (unless they have been deliberately left open by the farmer).
- Should you experience any difficulties in using public rights of way, please contact:

The Countryside and Rights of Way Section,  
Environment and Technical Services,  
County Hall, Durham. DH1 5UQ  
Telephone: (0191) 383 3452

The Coxhoe Cornforth Walkway is owned by Sedgfield Borough Council (southern section) and Durham City Council (northern section):

Planning and Technical Services,  
Sedgfield Borough Council,  
Spennymoor. DL16 6JQ.  
Tel. 01388 - 816166  
E-mail: [plan\\_technical@sedgfield.gov.uk](mailto:plan_technical@sedgfield.gov.uk)

Environmental Services,  
Durham City Council,  
Byland Lodge,  
Hawthorn Terrace,  
DURHAM, DH1 4TD.  
Tel. 0191-3018724 or 0191-3018728



Ash leaf

**Sedgfield**  
BOROUGH

For Service and Enterprise

